

Contents

1. Introduction	1
1.1 Prerequisites	1
2. Instructions	2
Downloading and Installing the LHITS Control Panel	2
3. Version Control	3
4. Contact Information	3

1. Introduction

This document describes how to download and install the LHITS Control Panel.

The LHITS Control Panel is a simple and light tool which will install all your tools, such as the IPOS Timeline tool and IPOS Reporting tool and subsequently keep them up to date.

You will need to log in to the IPOS tool when first installed, but after that point you will not need to again unless you change your password or your account expires.

The LHITS Control Panel will periodically check for updates and, if any are found, it will prompt you to install them by pressing the Update button. Other than this, no further action will be required after downloading, installing and signing in.

1.1 Prerequisites

- Windows 7 or higher
- .NET framework 4.7 or higher
- Microsoft Office 2010 or higher



2. Instructions

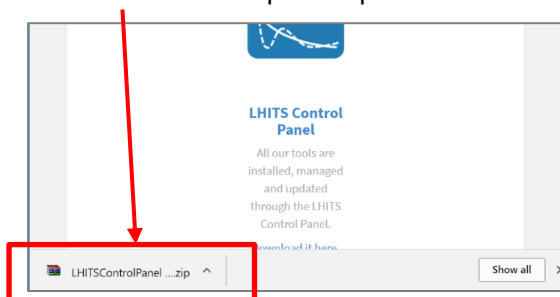
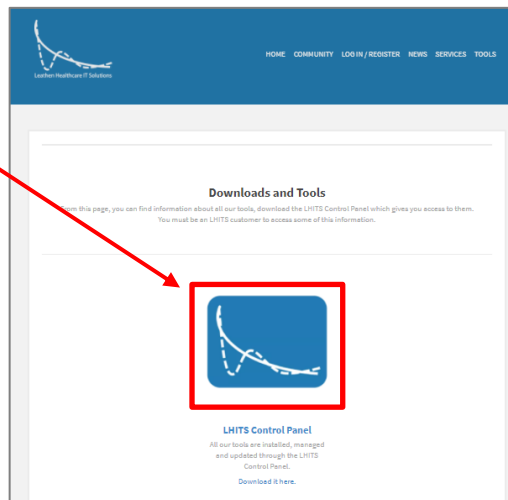
Downloading and Installing the LHITS Control Panel

Step 1. Go to www.lhits.co.uk/downloads

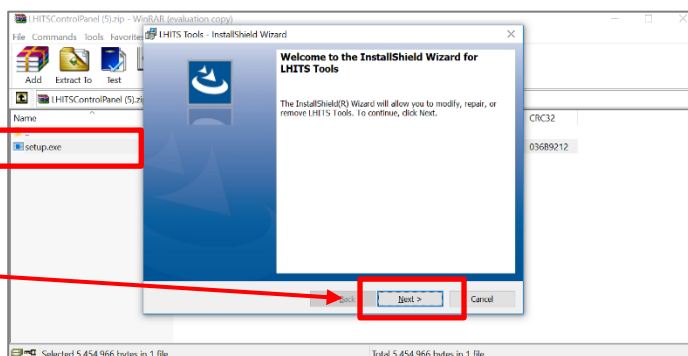
Step 2. Click on the icon to download the LHITS Control Panel file.

You will need to log in using your LHITS Username and Password to access this.

The file will be downloaded as a .zip file. Open this.



Step 3. After opening the LHITSControlPanel.zip file, click on the setup.exe



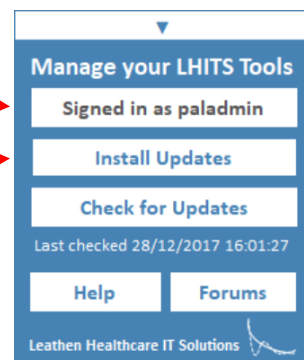
Then read through the pages, pressing Next when you are ready, until it is finished.

Step 4. Once complete, restart your computer at a convenient time.

When you next turn on your computer, the LHITS Control Panel will appear, and you will be able to sign in and install all the tools, such as the IPOS Timeline tool and the IPOS Reporting Tool.

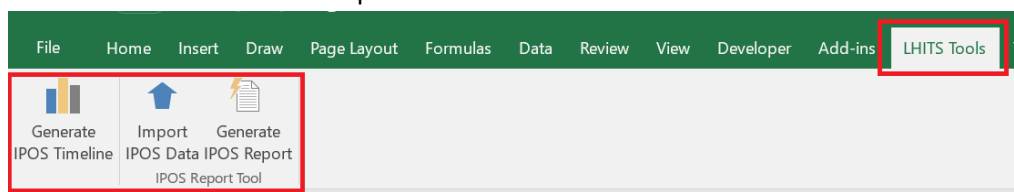
Press to sign in with your LHITS Username and password

Press to install all tools, including OACC IPOS Tools



In the future this tool can be found in your windows system tray as a small blue square with the LHITS logo inside. You can click this at any time to bring up the Control Panel.

Step 5. Open Microsoft Excel. You should now see an extra button in your Ribbon saying LHITS Tools, and buttons to activate the various tools we provide.





3. Version Control

Version	Date	Changed By	Description
1	01/09/2017	Sean Leathen	First version
1.1	09/01/2018	Sean Leathen	Added clarification for Excel

4. Contact Information

Please visit our website for further information on our company and products.

www.lhits.co.uk